

MXT-SKB2 type STAINLESS STEEL SIGHT GLASS

CHARACTERISTICS

The flow controller type MXT-SKB2 ANSI 150 is intended for direct visualization of the flow of fluids in pipes. Made of stainless steel, it is particularly suitable for controlling the flow of process fluids. The SKB2 ANSI 150 is of the double-glazed type and is also equipped with a leaf to improve the visibility of the flow. This controller is CE and ATEX approved.

AVAILABLE ITEMS

DN 15 à DN 150

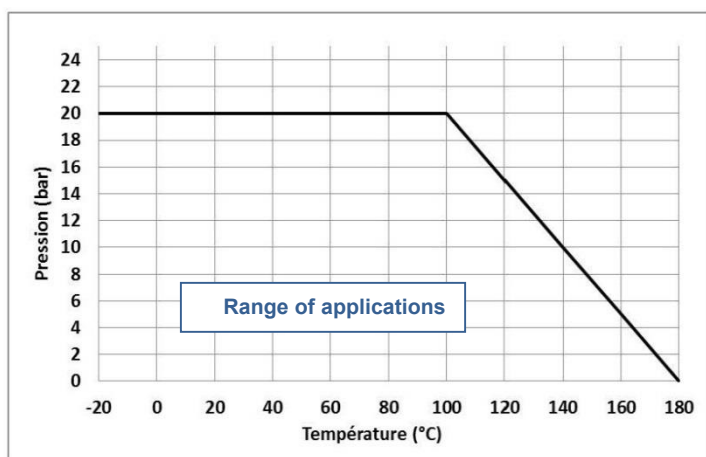
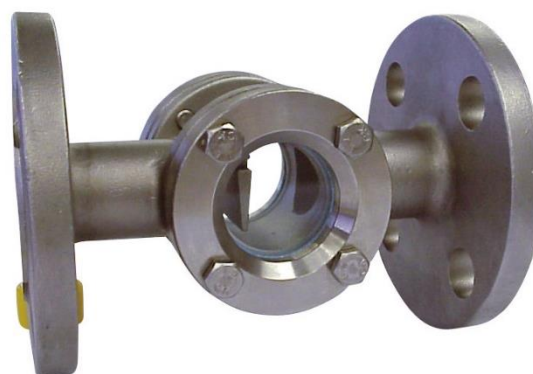
Flange connection B16.5 ANSI 150 RF

3.1
Cert.



LIMITS OF USE

Max. allowable pressure (PS)	20 bar
Min./max. allowable temperature (TS)	-20°C / +180°C
Room temperature	-20°C / +60°C



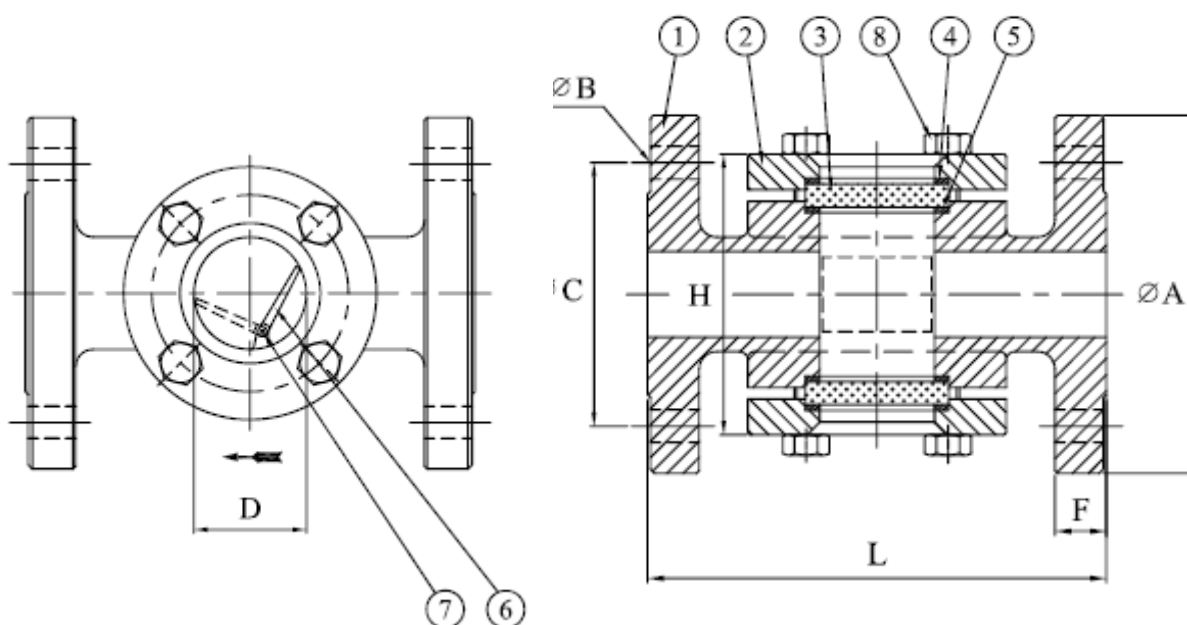
DIRECTIVES AND DEVELOPMENT STANDARDS APPLICABLE

	Standard	Notified		Norm
97/23/EC Pressure Equipment Directive	DN 15 to 25 : excluded		Shell design	EN 12516-1
	DN 32 to 200 : catégorie II	TÜV 0035	Material certificate	EN 10204 § 3.1
Alloy grade	EN 1503-1		Face-to-face dimensions	EN 558-1- serie 1
ATEX Directive	EN 13463-1	SIRA 0518	Room temperature -20°C / +60°C	Category II 2 G D TX

MXT-SKB2 type STAINLESS STEEL SIGHT GLASS

CONSTRUCTION

n°	Désignation	Quantité	Matière
1	Body	1	Stainless steel CF8M
2	Caps	2	Stainless steel CF8M
3	Glass	2	Tempered glass
4	Flat gasket	2	PTFE
5	Flat gasket	2	PTFE
6	Flapper	1	Stainless steel ANSI 316
7	Stem	1	Stainless steel AISI 304
8	Screw	8	Stainless steel AISI 304



DN	15	20	25	40	50	80	100	150	200
A	88.9	98.6	108	127	152	190	229	279	343
N – Ø B	4 -15.8	4 -15.8	4 -15.8	4 -15.8	4 – 19	4 – 19	8 – 19	8-22.2	12-22.2
Ø C	60.5	69.9	79.4	98.4	120.4	152.4	190.5	241.3	298.4
D	40	40	40	50	50	85	110	145	160
F	12.4	14.4	15	15.5	16.6	20.5	24.5	26	29
H	79	85	85	119	131	167	195	247	280
L	130	130	170	200	220	270	320	420	500
Weight (kg)	2.3	2.8	3.7	6.9	8.4	16.5	25.7	52	75

MXT-SKB2 type STAINLESS STEEL SIGHT GLASS

MOUNTING AND MAINTENANCE

- The sight glass can be installed in any position. In vertical position with flow down, the flapper will not function.
- Downstream from the steam trap, please keep a 1 metre distance between the steam trap and the sight glass in order to prevent from thermal shock on the glass.
- Please shut off the up and downstream pipes before installation.
- Depressurize and drain the piping
- Please wait for its cooling to room temperature.
- Wear the necessary safety equipment for this type of intervention (gloves and glasses).
- Remove the cover and glass
- Clean the internal parts.
- Check the glass condition in order to detect any possible corrosion or erosion mechanism and replace it if necessary.
- Screw the sight glass flanges on the pipes flanges using the appropriate gaskets, bolts and nuts.
- Position the device so that glasses can be easily checked by operators.
- Put the device back to operation.

ATEX ZONE USE

The SKB2-ANSI sight glass complies with the EC-ATEX Directive and is certified for use in explosive zones. It can be installed in zones 1, 2, 21 and 22.



SPARE PARTS

It is a kit including 1 glass and 2 gaskets

DN	Ø glass (mm)	Thickness (mm)	Reference
15-20-25	50	10	MXT-981077A
40-50	63	10	MXT-981078A
80	100	12	MXT-981079A
100	130	15	MXT-981080A
150	180	19	MXT-981082A
200	180	19	MXT-981082A